



Assembly Instructions

for Cargo Carrier Models:

UC500-XL



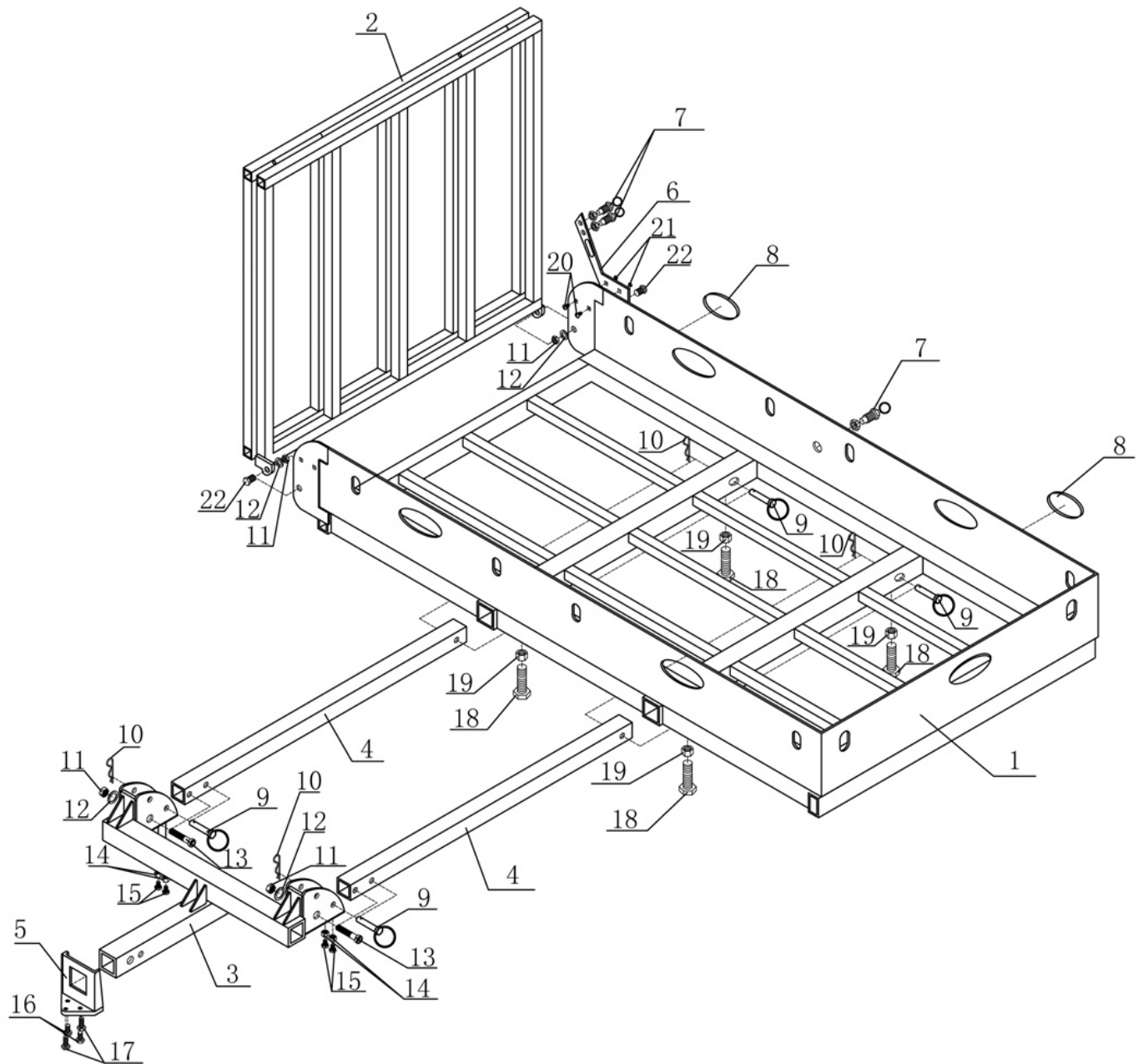
Warnings!

Please read the manual before using.

A warning indicates a potentially dangerous situation, which if not avoided, could result in death or serious injury.

1. Read all instructions and save them for future reference.
2. Follow all warnings and instructions marked on the product.
3. Do not ride any vehicle while loading onto the carrier.
4. Do not stand on the carrier.
5. Never exceed vehicle tongue weight ratings.
6. Always store the carrier in a safe place.
7. Only use the carrier with Class 3 or 4 - 2" hitch.
8. Improper use, storage or installation of carrier could result in death or serious injury.
9. Do not put the product on any kind of trailer.
10. Carrying capacity is limited to 500 lbs. max.
11. NOT recommended for tow-behind trailers including 5th wheel trailers & camping trailers.
12. Periodically check nuts and bolts for tightness.

Parts List:



Part Descriptions:

| Index | Description | Quantity |
|-------|-------------------|----------|
| 1 | Carrier Rack | 1 |
| 2 | Ramp | 1 |
| 3 | Hitch Tube | 1 |
| 4 | Main Tube | 2 |
| 5 | Anti-Tilt Bracket | 1 |
| 6 | Ramp Bracket | 1 |
| 7 | Spring Pull Pin | 3 |
| 8 | Reflector | 2 |
| 9 | O-Ring Pin | 4 |
| 10 | “R” Pin | 4 |
| 11 | Lock Nut M12 | 4 |
| 12 | Washer M12 | 4 |
| 13 | Bolt M12x60 | 2 |
| 14 | Nut M10 | 4 |
| 15 | Bolt M10x30 | 4 |
| 16 | Bolt M10x40 | 2 |
| 17 | Bolt M10x50 | 2 |
| 18 | Bolt M14x30 | 4 |
| 19 | Nut M14 | 4 |
| 20 | Bolt M8x16 | 2 |
| 21 | Lock Nut M8 | 2 |
| 22 | Bolt M12x30 | 2 |

Step 1:

Install Spring Pull Pin(7) into front of carrier basket(1). Allow the Spring Pull Pin(7) to partially cover the edge of the ramp(2).



Adjust Spring Pull Pin(7) with enough room that when pulled back the ramp(2), can be lifted out of the carrier basket(1). Securely tighten jam nut.



Step 2:

Flip carrier basket(1) upside down and slide the hitch tube assembly into the center support tube. Align the holes and insert Pins(9). Install 4 bolts(18)/nuts(19) and tighten firmly.



Step 3:

Flip carrier right side up and install ramp bracket(6) using carriage bolts(20) and lock nuts(21). Be sure the square shoulders on the carriage bolts seat fully in the square holes on the carrier.



Step 4:

Slide Anti-Tilt Locking Device(5) on carrier hitch tube with the 3 bolt side facing the hitch.



Step 5:

Slide Anti-Tilt Locking Device(19) tight up against hitch reciever, insert hitch pin(not included) or pinch bolt and tighten bolts using 17 mm wrench.



Step 6:

Adjust Leveler Bolt to align pin holes. Pin(9) should be able to be removed/installed without binding if properly adjusted. Tighten jam nuts when properly aligned.



Step 7:

To unfold the loading ramp pull the spring pull pin(7) on the carrier basket and lift ramp up. Next pull the ramp bracket(6) spring pull pins to allow the ramp to pass. Finally lay the loading ramp flat on the ground and load wheeled cargo. After cargo has been loaded store the ramp in the vertical position. To store in the vertical position lift the ramp back up and secure using the ramp bracket spring pull pins. Safely secure all cargo with quality tie downs.

